



**Chilver EXTREME PLATES**

[www.extremeplates.com](http://www.extremeplates.com)

**1 (888) 5 - Plates**

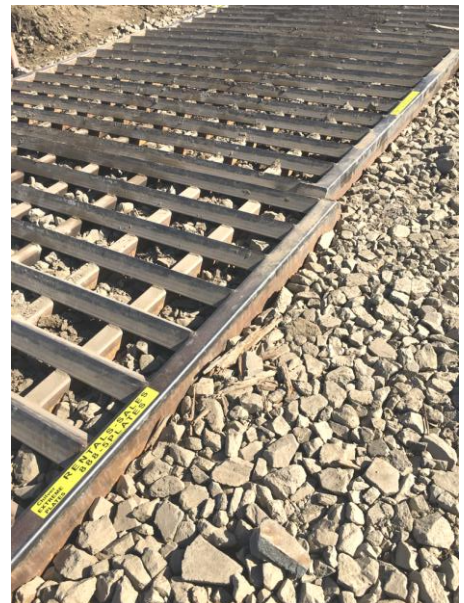
[sales@extremeplates.com](mailto:sales@extremeplates.com)

**Track-Out Plates for the Professional  
HEAVY DUTY**  
Many different models to choose from or let us  
custom build your next steel fabricated product

## Track-Out Grates - Tubular Steel - *BUY or RENT*

8' x 10' **ONLY 1,350lbs!**

Great for Stabilized Entries on base rock or dirt  
Ramps for hard surface placement  
On asphalt or concrete!



## Track-Out Plates - Traditional Design - *BUY or RENT*

**BUILT BETTER than YOURS!**

8' x 10' Steel Plate based units

2-1/2" x 1/4" Angle Iron

Look at the competitors;

They use 3/16" –

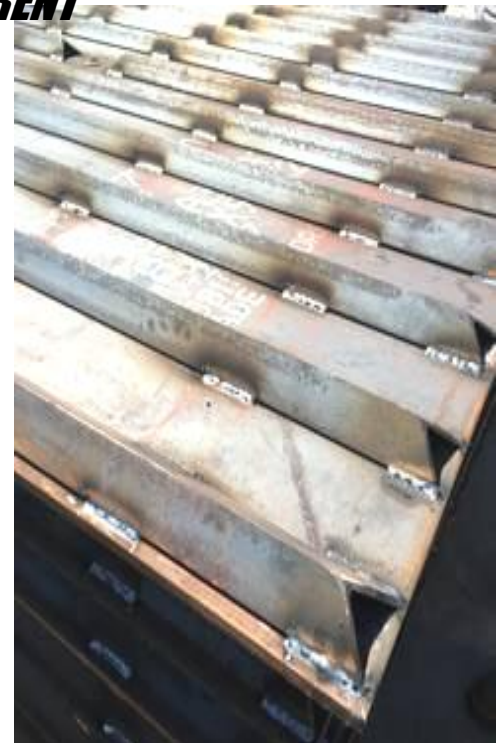
**WRONG! Not STRONG!**

45 degree cuts on EDGES

So no Ripped TIRE SIDEWALLS



Chilver Extreme Plates



***WE BUY BACK - CALL US FIRST!***